

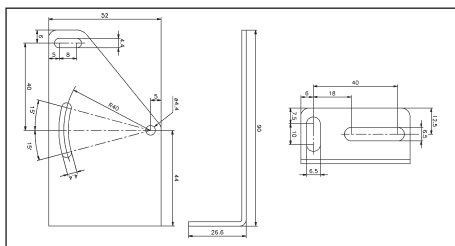
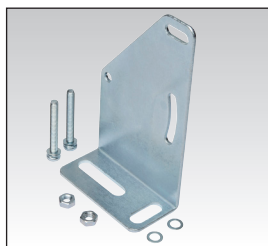
Cellules photoélectriques

Accessories

Matériel de montage

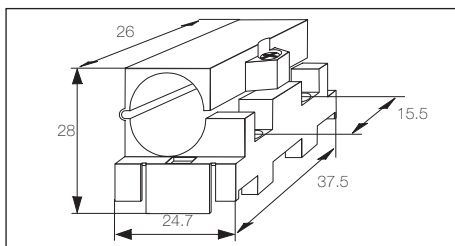
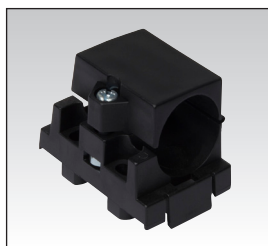


Patte de fixation, série PM longue, Type MB02



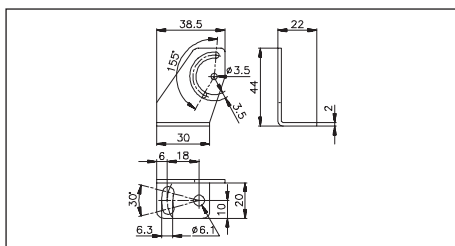
Code produit	MB02 (◇)
Matériau Corps	Acier galvanisé

Patte de fixation, Type MB18A

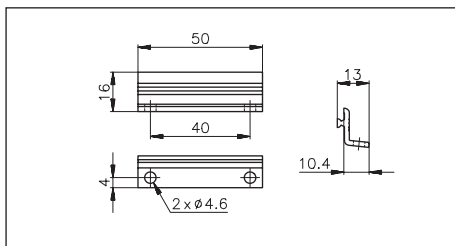


Code produit	MB18A (◇)
Matériau Corps	POM noir

Pattes de fixation, série PA, Types APA-2 & APA-3

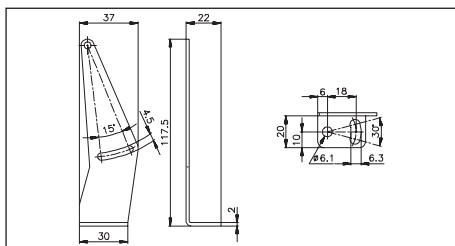


Code produit	APA-2 (◇)
Matériau Corps	Acier noir



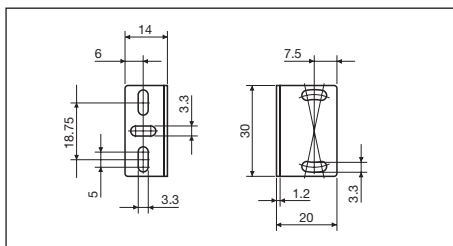
Code produit	APA-3 (◇)
Matériau Corps	Aluminium anodisé

Patte de fixation, série PB, Types APB-1



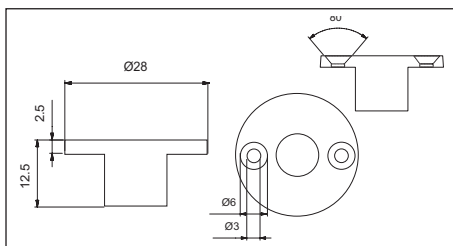
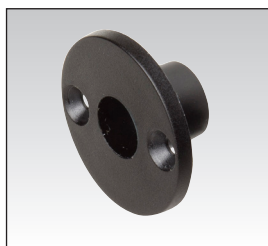
Code produit	APB-1 (◇)
Matériau Corps	Acier noir

Pattes de fixation, Type APD32-MB3



Code produit	APD32-MB3
Matériau Corps	Acier chromaté

Patte de fixation, Type AMO-MB5



Code produit	AMO-MB5
Matériau Corps	Nylon